

{ewl hdkanim.dll,HDK\_ANIMPICT,circ.bmp;65585;20}

## Table of Contents

[Click Here For Critical Information About This CD-ROM](#)

### Click On The Red W For More Details



#### Letter From The Editorial Director

A few words of welcome from Fred Langa and Paul Schindler.



#### 1,250 Tips and Tricks

What more is there to say?



#### Wintune Test and Tuneup Kit

The fastest way to make your Windows PC run faster



#### Superior Shareware

Virtually every shareware program mentioned in WINDOWS from January 1994-May 1995

## Wintune

[Click Here For Critical Information About This CD-ROM](#): Applies to Wintune

The Wintune Test and Tuneup Kit checks out your computer and offers advice on how to make it run faster. Click on the Wintune icon below to install the program, then check out the associated Help file to find out more about what Wintune does and how it does it.

Wintune 2.0 requires Windows 3.1 or higher, 4MB of RAM, and about 1.75MB of disk space. It was designed for (and tested on) 386, 486, and Pentium class Intel-based computers. It will run only in 386 Enhanced Mode, thus will not work on a 286.

Wintune will run, but will not issue performance tuning tips, on OS/2 2.1 and OS/2 Warp v.3, Windows NT 3.1 and 3.5, and Windows 95. On all these systems, it is necessary to set the disk cache size manually using the /c command-line switch discussed in Wintune's online help.

NOTE: A newer version of Wintune is expected to be available by the time you read this. It will be posted in the **WINDOWS Magazine** forums on America Online (Keyword: Winmag) and CompuServe (GO WINMAG). If you have trouble finding it (or problems with the version on this CD) please leave a message on the forum.

[PLEASE CLICK HERE TO READ A CAUTIONARY NOTE BEFORE INSTALLING](#)



<-Click on this icon to launch Wintune's install program



Late Information

A text file with late information on Wintune



FAQ

Frequently Asked Questions

## Tips and Tricks



Tips and Tricks

The **WINDOWS Magazine** Survival Kit, which contains more than 1,250 tips and tricks for improving the

performance of Windows and Windows applications, is a Help file (developed using [HelpBreeze](#)).

## Superior Shareware

Skip the Details;  
Start Now!

[Click Here For Critical Information About This CD-ROM:](#) Applies to Shareware

Every month, **WINDOWS Magazine** gathers the best available shareware from numerous sources for the Superior Shareware column. **WINDOWS Magazine CD** contains the latest versions of virtually all the software that appeared in the column during 1994 and 1995 (in each case, we asked the author's permission to redistribute the software on this CD-ROM; in cases where we did not hear back from the author, we have not included the software).



Shareware

Start the shareware file for instructions on accessing the shareware on this disk. You can also browse through it by hand, simply by using File Manager to examine the subdirectories of \WMSHARE and \WMSHAR95 on this CD-ROM.

You have **not** purchased these shareware programs with your purchase of this CD-ROM. (If a program is labeled as freeware, then it is indeed free.)

Support the "try before you buy" shareware concept! Abide by the shareware honor system; if you plan to continue to use a program after the evaluation period has expired, please send the registration fee to the author.

Thank you--and enjoy!

**Julie Blumenfeld**  
**Online Editor**  
**WINDOWS Magazine**

## Information About This CD-ROM

To Subscribe



### Disclaimer

Because of the low cost of this CD, we cannot provide extensive one-on-one technical support. If your CD will not run, check out the WinMag CD-ROM folder on America Online in the **WINDOWS Magazine** area (Keyword: WINMAG), or on our CompuServe forum (GO WINMAG).

Some frequently asked questions are answered in WMCDFQAQ.TXT, in the root directory of this CD-ROM. You can open this file by clicking on the More Details button below.

### Details

\\WMCDFQAQ.TXT.

If you believe your CD is defective you can return it to the following address and request a replacement:

Carol Renta  
Windows Magazine  
600 Community Drive  
Manhasset, NY 11030



### Paul Schindler

Paul E. Schindler Jr., who compiled this CD-ROM.



### SW Pkg & Dup

SPD prepared test CD-ROMs



### Online Access

Reach **WINDOWS Magazine** electronically.



### US Mail

Reach **WINDOWS Magazine** by U.S. mail.



### HelpBreeze

HelpBreeze, a Windows Help authoring tool used in the development of the Survival Kit (1,250 tips and tricks).



### HDK

HDK, a Windows Help authoring tool used in the development of **All The Words**.



### ScreenCam

Lotus ScreenCam was used to prepare our video demonstrations



### CD Archive

CD Archive prepared test CD-ROMs.



Martin Heller

Martin Heller  
wrote  
SETUP.EXE  
and  
INSTALL.EXE.



Kim Crouse

Kim Crouse  
wrote  
WMLAUNCH.E  
XE and .DLL.



Copyright

Our copyright  
notice



Subscribe

Subscription  
information

## Manual Installation Instructions

WinMag CD programs are not, for the most part, "installed," in the traditional Windows sense of the word. With some exceptions (Wintune, shareware, demoware), the programs are Help files which stay on your CD-ROM. You install only a program manager icon to facilitate launching the programs.

There are several ways to install icons or launch CD programs directly. The method we suggest is below. If you wish to see the other methods, push the More Details button at the bottom of this topic.

### Installing a Program Manager Icon

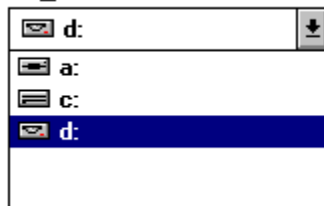
#### USING THE PROGRAM MANAGER FILE MENU

- Using File Manager, copy the WINMAG.ICO file from the root directory of this CD-ROM to your Windows directory.
- Click in the open Program Manager group in which you want the new icon to appear.
- Select New from the File Menu.
- Select the Program Item radio button.
- In the Description Box, type the description you wish to appear beneath the icon. For example:

File Name	Description
HELLO.HLP	<b>Welcome To WinMag CD</b>
SHAREWAR.HLP	<b>Superior Shareware</b>
TIPS.HLP	<b>1,250 Tips and Tricks</b>

- Click on the Browse button.
- Select the CD-ROM icon in the drive box (as shown here). Note: The CD-ROM may not be drive D on your system, but it will have the same distinctive icon.

Drives:



- In the File Name drop down list, double-click on the name of the particular file whose icon you are installing (for example, SHAREWAR.HLP).
- You will be returned to the Run dialog box. The path name and file name for (for example, D:\SHAREWAR.HLP) should appear in the Command Line box.
- Click on the Change Icon Button, then the Browse button and select WINMAG.ICO from your WINDOWS directory.
- Click OK.
- You will see a message from Windows that tells you this icon "points to a file that may not be available" during future sessions. It is showing you this message because a CD-ROM is a removable disk drive. Click OK. Do not attempt to run Shareware unless the **WINDOWS Magazine CD** is in your CD-ROM drive.
- A new icon should appear in your Program Manager group.

**Details**





## Other Manual Installation Instructions

### INSTALLING ICONS USING DRAG AND DROP

- Open File Manager and double-click on the CD-ROM icon (as shown here). Note: The CD-ROM may not be drive D on your system, but it will have the same distinctive icon.



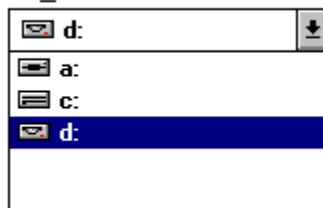
- Copy the WINMAG.ICO file from the root directory of this CD-ROM to your Windows directory.
- In the File Name drop down list, click on the name of the file for which you want to install an icon (for example, for SHAREWAR.HLP).
- Hold down your left mouse button and drag the file into the open Program Manager group in which you want the icon. As you do this, you should see an icon that looks like a piece of paper and has a + sign in it.
- Release the left mouse button; a new icon should appear in the Program Manager group.
- Close File Manager.
- Select the new icon.
- Select Properties from the File menu of Program Manager.
- In Description Box, type a description. (For example, for SHAREWAR.HLP, you would type WinMag Full Text 1994.)
- Click on the Change Icon button, then the Browse button and select WINMAG.ICO from the root directory of your CD-ROM.
- Click OK.
- You will see a message from Windows that tells you this icon "points to a file that may not be available" during future sessions. It is showing you this message because a CD-ROM is a removable disk drive. Click OK. Do not attempt to run Shareware unless the **WINDOWS Magazine CD** is in your CD-ROM drive.

### Launching Directly

#### FROM PROGRAM MANAGER:

- Select Run from the File menu.
- Click on the Browse button.
- Select the CD-ROM icon in the drive box (as shown here). Note: The CD-ROM may not be drive D on your system, but it will have the same distinctive icon.

Drives:



- In the File Name drop down list, double-click on the file you want (for example, SHAREWAR.HLP).
- You will be returned to the Run dialog box. The path name and file name should appear in the Command Line box.

- Click OK.

### **FROM FILE MANAGER**

- Double-click on the CD-ROM icon (as shown here). Note: The CD-ROM may not be drive D on your system, but it will have the same distinctive icon.



- In the File Name drop down list, double-click on the file you want (for example, SHAREWAR.HLP).
- File Manager will now launch the Shareware Help file.

{ewc hdkanim.dll,HDK\_ANIMPICT,langash.bmp;;4} Letter From The Editorial

Director

To Subscribe

By Fred Langa, Editorial Director, **WINDOWS Magazine**

Welcome to the Special Circulation Premium issue of **WINDOWS Magazine CD**.

This is a special sampler version of our regular quarterly CD-ROM. Every quarter, **WINDOWS Magazine CD**, like the parent magazine, will have both recurring features and special features.

Each issue will contain a rolling 12-month collection of the full text of back issues (searchable by keyword as well as full text). It will also contain the last year's worth of Superior Shareware (when the authors give us permission--some prefer not to have their software distributed on CD). Each issue will also include any files referenced in articles.

Any shareware or freeware written by the staff or contributors of **WINDOWS Magazine** will also be included on the CD as a matter of course. This circulation premium edition contains Wintune 2.0 ([Click Here](#) to find out how to install it); the Fall 1995 issue will contain the next version of our popular Test and Tuneup Kit.

## Special Features

In addition, there will be special features, usually the most significant cover story of the previous quarter in the magazine.

There are a few unobvious features of this CD that our CD Editor, [Paul Schindler](#), said you definitely should know about:

- You can launch any of the Screencam demonstrations for Tips and Tricks by going directly to the CAMS directory

### NOTE TO EVERYONE:

Please enjoy this CD. We can't offer technical support, but Paul and I would love to hear your comments. Send them to [1752137@mcimail.com](mailto:1752137@mcimail.com).

**NOTE TO PROGRAMMERS From Paul Schindler, the CD Editor:** You might find the completely and utterly unsupported WMLAUNCH.EXE and WMLAUNCH.DLL interesting. See also \WMLAUNCH.TXT, which explains (and warns) about them. It turns out you can do much the same thing with SHELL.DLL (but without all the wonderful and meaningful error messages); for details see the completely and utterly unsupported \SHELL.TXT. It turns out you can't launch files based on their WIN.INI association from WINHELP, the Windows Help File engine, which is why I had to discover all this in the first place. Maybe I can save you the trouble. Just keep buying our CD.

## **{ewc hdkanim.dll,HDK\_ANIMPICT,exclaimr.bmp;;2}Disclaimer**

While **WINDOWS** Magazine has gone to great lengths to make sure the text and Demoware in **Windows Magazine CD** is as accurate as possible, we do not guarantee any or all of the software on this CD-ROM will work properly on all systems all the time, and therefore offer the advice "as-is" without warranty or guarantee as to merchantability or suitability to task. Your use of this software is at your own risk. If you aren't sure of the suitability to task of software on this disk, or are uncertain about your ability to install and operate it, seek additional advice before proceeding. In any case, CMP Publications Inc., its employees or freelancers are not responsible for any injury, damage or loss resulting from your use of this disk or the information it contains.

## {ewc hdkanim.dll,HDK\_ANIMPICT,infov.bmp;;2}HelpBreeze



HelpBreeze turns Microsoft Word 6.0x or 2.0x into a complete point-and-click environment for developing Windows Help files.

Price: \$279

Solutionsoft

999 Evelyn Terrace West

Suite 86

Sunnyvale, CA 94086

tel: 408-736-1431

fax: 408-736-4013

e-mail: CompuServe 75210,2214

Internet 75210.2214@compuserve.com

## Copyright Notice

The 1994 Survival Guide (1,250 Tips and Tricks)  
Wintune Test and Tuneup Kit  
and the contents of all the 1994 issues of **WINDOWS Magazine**  
are **Copyright © 1994 and 1995 by**

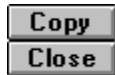


**CMP Publications Inc. All rights reserved.**



Disclaimer

## {ewc hdkanim.dll,HDK\_ANIMPICT,infov.bmp;;2}Online Access



Our forums are on America Online (AOL). For information on joining AOL, call 1-800-227-6364.

Our e-mail address is [windowsmag@aol.com](mailto:windowsmag@aol.com) via Internet.

You can receive a copy of the latest version of our Frequently Asked Questions (FAQ) document by sending an e-mail message to [wmcdfaq@dnai.com](mailto:wmcdfaq@dnai.com).

{ewc hdkanim.dll,HDK\_ANIMPICT,infov.bmp;;2}US Mail

Copy

Close

[WINDOWS Magazine or CD](#)

1 Jericho Plaza

Jericho, NY 11753-1635

## **WINDOWS Magazine or CD**

To subscribe to **Windows Magazine CD** call 800-829-9831. Outside the U.S. call 904-445-4662 ext. 817.  
[Click Here](#) for more details and mail subscription information.

To subscribe to the magazine, call 800-829-9150. Both are CMP publications.



**{ewc hdkanim.dll,HDK\_ANIMPICT,infov.bmp;;2}ScreenCam**



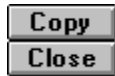
Lotus ScreenCam, a multimedia screen and sound capture utility, allows users to capture application screen activity, cursor movements and sound into an integrated file. The file can then be played back in full screen format and distributed to other users to improve learning, presentation and communication.

Price: \$79

Lotus Development Corp.

800-343-5414

{ewc hdkanim.dll,HDK\_ANIMPICT,infov.bmp;;2}HDK



HDK is a set of tools that can be used in conjunction with Word for Windows and the Microsoft Help Compiler to create Windows Help files--in reality, Hypertext documents. HDK enhances the WinHelp display engine (shipped with every copy of Windows) by adding on its own graphical Contents View, which makes it easy for end-users to locate information in large manuals. It graphically represents the chapters and sub-chapters in the manual; the user simply clicks on a topic to display it.

HDK automatically provides Full Text Indexing, thus overcoming WinHelp's biggest limitation. End-users can now find any word, anywhere in the document.

HDK costs \$395. It was developed by Virtual Media Technology of Australia and is distributed exclusively in the United States by:

DEK Software International  
1843 The Woods II  
Cherry Hill, NJ 08003  
Tel: 609-424-6565 Fax: 609-424-0785  
E-mail: CompuServe 75143,3631  
Internet: 75413.3631@compuserve.com

## {ewc hdkanim.dll,HDK\_ANIMPICT,infov.bmp;;2}CD Archive, Inc.



CD Archive Inc. can make as few as one disc to about 50 discs to be used for beta testing or archiving. For creating more than about 50 discs it becomes more cost effective to use a large-scale manufacturing process. CD Archive can help you with the mastering process and then work with you until your product is ready for mass replication. CD Archive can be used to make prototype discs for discs that range from beta discs of your product, to large data archival and backup projects.

CD Archive also carries hardware, including CD recorders, software, and blank CD-Recordable discs. Since it produces so many discs it is uniquely qualified to sell the equipment since it also uses it. The large storage capacity of 650 Megabytes of data makes CD-ROM the ideal archival medium. Studies have shown that an RCD (recorded CD) will last between 50 and 100 years.

For more information call 800-435-6779 or fax 800-FAX-9660. Outside the US and Canada CD Archive can be reached at 614-444-8866 voice and 614-444-4557 fax.

{ewc hdkanim.dll,HDK\_ANIMPICT,infov.bmp;;2}Kim Crouse



WMLAUNCH.EXE and WMLAUNCH.DLL make it possible for our Help files to load .DOC, .XLS and .ZIP files into any application which is capable of handling such files, something Windows Help cannot do by itself. These two programs were written for **WINDOWS Magazine** on short notice and under great pressure by Kim Crouse at 800-757-7079, who does both programming and consulting.

{ewc hdkanim.dll,HDK\_ANIMPICT,infov.bmp;;2}Martin Heller



INSTALL.EXE was written by **WINDOWS Magazine's** Programming Windows columnist, Martin Heller, who writes software and books about software. He can be reached via electronic mail at [MHELLER@BIX.COM](mailto:MHELLER@BIX.COM).

{ewc hdkanim.dll,HDK\_ANIMPICT,headss.bmp;;4}Paul E. Schindler Jr.



CD Editor Paul Schindler, who has been with **WINDOWS Magazine** since its relaunch in 1991, compiled this CD-ROM from the magazine and its internal databases, by converting the available content into Windows Help files. He has been with CMP more or less continuously since since 1979. Tom LaSusa is the Assistant CD Editor.

## {ewc hdkanim.dll,HDK\_ANIMPICT,infov.bmp;;2}Effects of Installation



Automatic installation of Tips and Tricks (The Survival Guide), All The Words (the text of the 1994 issues) or the Superior Shareware guide takes only a few thousand bytes of hard disk space and does not affect the system files: CONFIG.SYS, WIN.INI, SYSTEM.INI or AUTOEXEC.BAT.

**HOWEVER**, installing Wintune, Shareware or Demoware can affect system files and **MAY** affect other programs. Please exercise caution (back up all four system files mentioned above) before installing Wintune, shareware or Demoware. If you don't know how to copy files, DON'T INSTALL SHAREWARE OR DEMOWARE until you're more comfortable with your Windows skills.

Software Packaging and Distribution produced beta copies of the June issue of the **Windows Magazine CD**. This material was supplied by the vendor:



## **PACKAGING & DUPLICATION**

---

For the Complete Solution please call us at (510)533-4060 or fax us at (510)533-3762.

Internet: [spddupe@hooked.net](mailto:spddupe@hooked.net)

At Software Packaging & Duplication we are dedicated to providing you with the experience and expertise needed to take your multimedia CD ROM project from the beta testing stage to mass manufacturing.

As CDs popularity increases and they become more cost effective it is important to use a company with the technology and knowledge to guide you through the standards, formats and terminology. We use high end professional duplication systems to produce from 1 to 100 CDs for beta testing or to create a master for mass replication. This assures the utmost readability across a wide variety of drives.

We also offer a full range of services, which include; **custom packaging**, **printing**, **diskette duplication**, **CD ROM replication**, **material assembly**, **warehousing** and **distribution**.

For **The Complete Solution** please call us at (510)533-4060 or fax us at (510)533-3762. Internet: [spddupe@hooked.net](mailto:spddupe@hooked.net)



## Windows Magazine CD Subscription Details



4 quarterly issues, \$39.95.

In Canada add \$10 for postage.

All other countries add \$18 for postage. All foreign orders must be prepaid in U.S. funds only.

Send orders to

Windows Magazine CD

P.O. Box 420479

Palm Coast, FL 32142-0479

Or call: 800-829-9831.

Outside the U.S. call 904-445-4662 ext. 817.

